



# FESTIVE AFTERNOON TEA MENU

## Sandwiches

Free-range egg & cress (E)(G)(SY)

Poached salmon, lemon & dill mayonnaise (E)(G)(F)(SY)

Turkey & cranberry (G)(S)(SY)

Cream cheese & cucumber (G)(SY)(M)

## Scones

Two plain scones with clotted cream, Tiptree  
strawberry jam & Boxford Farms apple  
cinnamon compote (E)(G)(M)

## Sweet

Meringue Christmas tree (E)

Vanilla panna cotta, cherry compote (M)

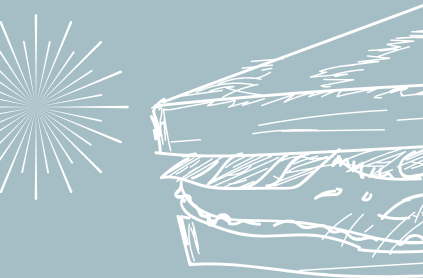
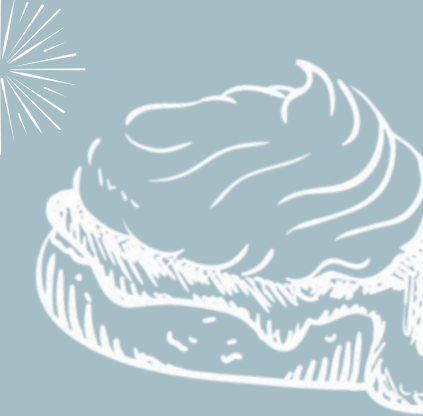
Salted caramel chocolate brownie (SY)

Chocolate & orange cream profiterole (E)(G)(SY)(M)

Mini treacle tart (E)(M)

*Choose from a selection of Twinning's teas or  
Café du Monde Fairtrade cafetière coffee*

V = Vegetarian VG = Vegan VGA = Vegan Available  
GF = Gluten Free GFA = Gluten Free Available DF = Dairy  
Free DFA = Dairy Free Available S = Sulphites N = Nuts  
NFA = Nut Free Available SS = Sesame SY = Soya E = Egg  
F = Fish C = Celery M = Milk CR = Crustacean  
P = Peanuts MO = Molluscs MU = Mustard G = Gluten





# LIGHT LUNCHES

## Caesar Salad

With either Cajun chicken  
or flaked poached salmon (F)  
(E)(G)(M)(G)(GFA)

## Prawn & Avocado Salad

Thousand Island citrus cocktail sauce,  
brown bread & butter  
(E)(CR)(M)(G)(GFA)(DFA)

## Spa Ploughman's

Baked baguette, balsamic pickled onions,  
baby artichokes, sun-blushed tomatoes,  
celery sticks, Boxford Farms apple & apricot  
chutney (S)(G)(C)(GFA)(VGA)(DFA)

### With either:

Cornish Yarg and brie cheeses (M)

or

Smoked honey roasted carvery ham (E)(SS)

V = Vegetarian VG = Vegan VGA = Vegan Available  
GF = Gluten Free GFA = Gluten Free Available DF = Dairy  
Free DFA = Dairy Free Available S = Sulphites N = Nuts  
NFA = Nut Free Available SS = Sesame SY - Soya E = Egg  
F = Fish C = Celery M = Milk CR = Crustacean  
P = Peanuts MO = Molluscs MU = Mustard G = Gluten



# VEGETARIAN AFTERNOON TEA MENU

## Sandwiches

- Free-range egg & cress (E)(G)(SY)
- Cheddar cheese & tomato chutney (E)(G)(S)(SY)(M)
- Roasted red pepper & hummus (G)(S)(SY)(SS)
- Cream cheese & cucumber (G)(SY)(M)

## Scones

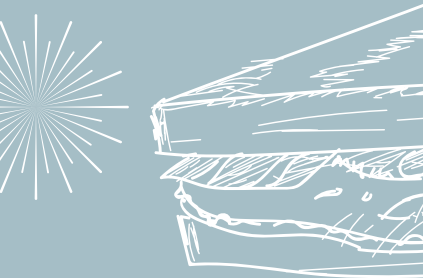
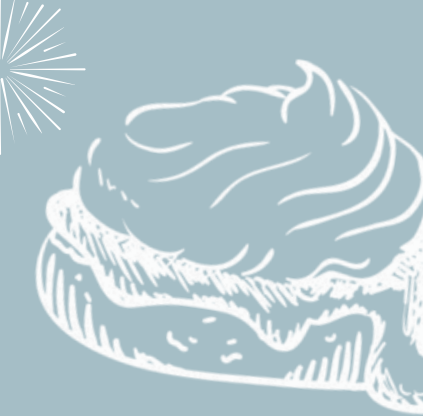
- Two plain scones with clotted cream, Tiptree strawberry jam & Boxford Farms apple cinnamon compote (E)(G)(M)

## Sweet

- Meringue Christmas tree (E)
- Vanilla panna cotta, cherry compote (M)
- Salted caramel chocolate brownie (SY)
- Chocolate & orange cream profiterole (E)(G)(SY)(M)
- Mini treacle tart (E)(M)

*Choose from a selection of Twinning's teas or  
Café du Monde Fairtrade cafetière coffee*

V = Vegetarian VG = Vegan VGA = Vegan Available  
GF = Gluten Free GFA = Gluten Free Available DF = Dairy  
Free DFA = Dairy Free Available S = Sulphites N = Nuts  
NFA = Nut Free Available SS = Sesame SY - Soya E = Egg  
F = Fish C = Celery M = Milk CR = Crustacean  
P = Peanuts MO = Molluscs MU = Mustard G = Gluten





# VEGAN AFTERNOON TEA MENU

## Sandwiches

- Red pepper, hummus & cress (G)(SY)(SS)
- Vegan cheese & pickle (G)(SY)
- Smashed avocado & watercress (G)(SY)
- Vegan cream cheese & cucumber (G)(SY)

## Scones

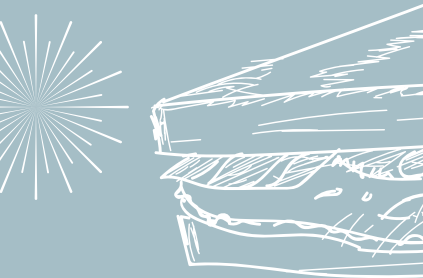
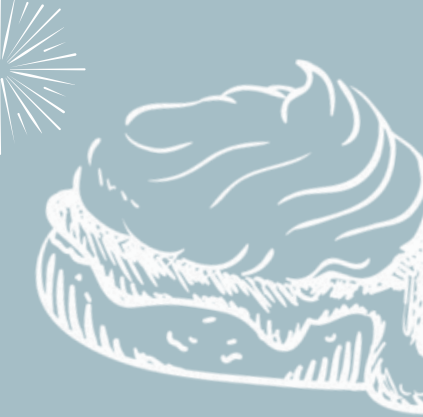
- Two plain scones with vegan cream, Tiptree strawberry jam & Boxford Farms apple cinnamon compote

## Sweet

- Coconut & jam macaroon
- Blackcurrant delice
- Salted caramel chocolate brownie (SY)
- Mincemeat crumble slice (N)
- Chocolate & raspberry cheesecake (SY)

*Choose from a selection of Twinning's teas or  
Café du Monde Fairtrade cafetière coffee*

V = Vegetarian VG = Vegan VGA = Vegan Available  
GF = Gluten Free GFA = Gluten Free Available DF = Dairy  
Free DFA = Dairy Free Available S = Sulphites N = Nuts  
NFA = Nut Free Available SS = Sesame SY - Soya E = Egg  
F = Fish C = Celery M = Milk CR = Crustacean  
P = Peanuts MO = Molluscs MU = Mustard G = Gluten





# GLUTEN FREE AFTERNOON TEA MENU

## Sandwiches

Free-range egg & cress (E)(SY)

Prawn Marie Rose (E)(CR)(C)(SY)

Ham & tomato chutney (S)(SY)

Cream cheese & cucumber (M)(SY)

## Scones

Two plain scones with clotted cream, Tiptree strawberry jam & Boxford Farms apple cinnamon compote

## Sweet

Coconut & jam macaroon

Blackcurrant delice

Salted caramel chocolate brownie (SY)

Mincemeat crumble slice (N)

Chocolate & raspberry cheesecake (SY)

*Choose from a selection of Twinning's teas or  
Café du Monde Fairtrade cafetière coffee*

V = Vegetarian VG = Vegan VGA = Vegan Available  
GF = Gluten Free GFA = Gluten Free Available DF = Dairy  
Free DFA = Dairy Free Available S = Sulphites N = Nuts  
NFA = Nut Free Available SS = Sesame SY - Soya E = Egg  
F = Fish C = Celery M = Milk CR = Crustacean  
P = Peanuts MO = Molluscs MU = Mustard G = Gluten

